



## Pressure Relief Valve A-14377-ML-A For Chlorine Service

### **Corrosion-resistant safety valve improved to include redundant seals to atmosphere, eliminating potential leak paths and further increasing the long life and reliability in Chlorine transportation**

For more than 25 years, Midland has been providing the A-14377 combination pressure relief valve for Chlorine Service. The Midland A-14377 ML-VL has become the standard valve used by major shippers of Chlorine by rail and truck in North America. The A-14377 Pressure Relief Valves are constructed of corrosion-resistant hastelloy c body material with hastelloy c and Monel™ trim to withstand the corrosive environment seen in Chlorine applications.

Utilizing more than 50 years of experience as one of the leading manufacturers of pressure relief valves, Midland has redesigned the new A-14377-ML-A-VL Pressure Relief Valve. This valve provides additional sealing protection to prevent Chlorine from reaching the atmosphere. By incorporating the same proven triple-seal O-ring construction currently used in the A-713 Midland Chlorine valve, this enhanced valve will help to further decrease NARs for railcars in Chlorine service. The new additional O-rings will prevent any leakage from the rupture disc seal from reaching the atmosphere.

Because of Midland's commitment to safety and quality, tank cars shipped with Midland valves stay in service longer and are more easily maintained. The unique new flange design for the rupture disc holder incorporates two



**New improved O-ring construction**  
Triple-seal O-ring  
decreases NARs for railcars

additional O-rings along with three additional metal-to-metal contact points to ensure better, easier seating during the assembly process. The new design can also be retrofitted to existing valves in service with a simple conversion kit.

### **Features**

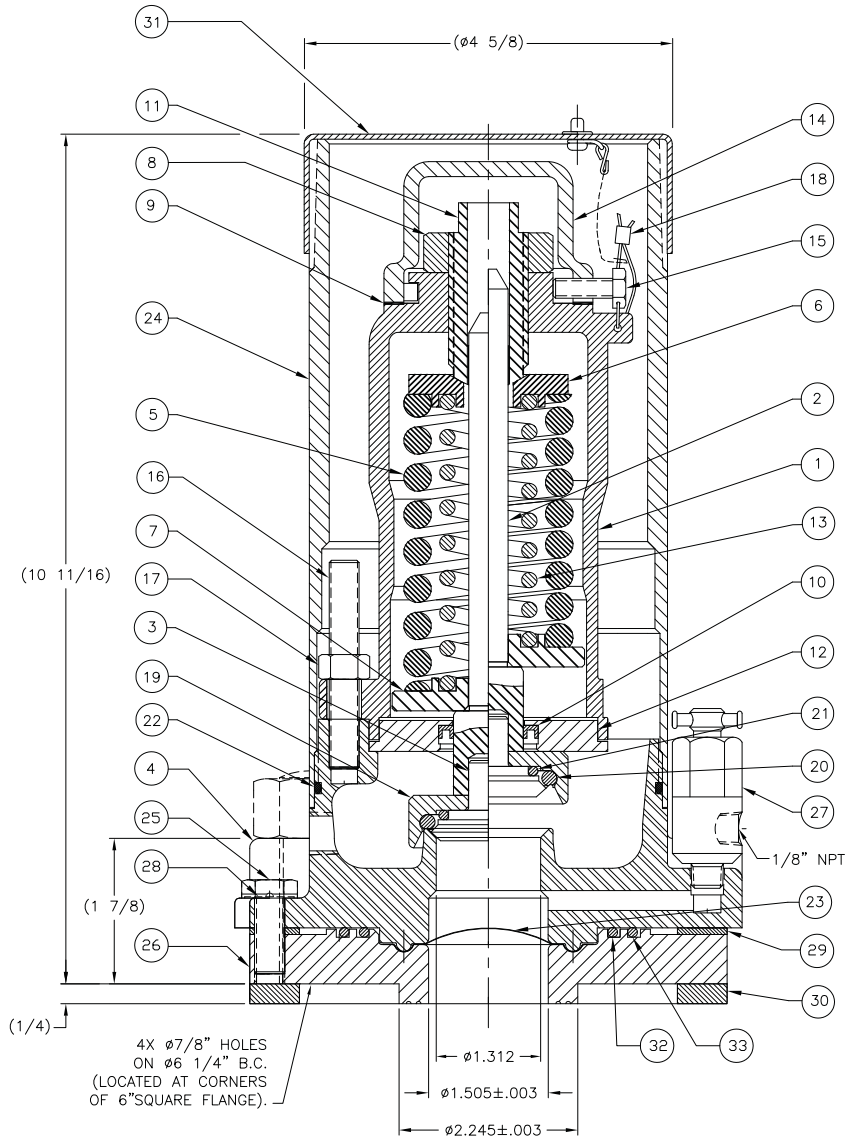
- **Corrosion-resistant materials provide maximum protection from wet Chlorine**
- **Successfully used in Chlorine and AHCL applications**
- **Triple seals on all potential leak paths to atmosphere**
- **Cappable with both Midland B-240 ERK kit and Chlorine Institute C-Kit**

## Ordering Specifications

## A-14377-ML-A Pressure Relief Valve

### A-14377-ML-A

ITEM	DESCRIPTION
1	TOP GUIDE
2	STEM
3	PLUG
4	BODY
5	OUTER SPRING
6	FOLLOWER
7	GUIDE
8	TOP NUT
9	TOP GASKET
10	SHAFT SEAL
11	ADJUSTING SCREW
12	SEAL RETAINER
13	INNER SPRING
14	CAP
15	SCREW
16	STUD
17	NUT
18	WIRE SEAL
19	RETAINER
20	SEAT "O" RING
21	PLUG "O" RING
22	FLUE "O" RING
23	RUPTURE DISC
24	FLUE
25	RUPTURE DISC FLG BOLTS
26	RUPTURE DISC FLANGE
27	1/8" VALVE
28	NAMEPLATE
29	UPPER FILLER
30	LOWER FILLER
31	PROTECTIVE CAP/CHAIN
32	FLANGE O-RING INNER
33	FLANGE O-RING INNER



VALVE PART NUMBER	ORIFICE AREA (SQ IN)	FLOW PRESSURE (PSIA)	FLOW RATE @ 10% > R.D. (CFM AIR)	SPRING PART NUMBER
A-14227-ML-A	1.35	262.3	4269	15-150-SS
A-14377-ML-A	1.35	427.2	7299	15-225-SS
A-14502-ML-A	1.35			



Learn more about stopping NARs. Go to [midlandmfg.net](http://midlandmfg.net) and follow the link to <http://nar.aar.com>

PHONE: (847) 677-0333 • Fax: (847) 677-0138

7733 Gross Point Road • Skokie, IL 60077 • [www.midlandmfg.net](http://www.midlandmfg.net)